

# RELEVANT EXPERIENCE

Livable Centers / Management District Identity / Wayfinding and Signage



## Energy Corridor Management District

Location: Houston, Texas

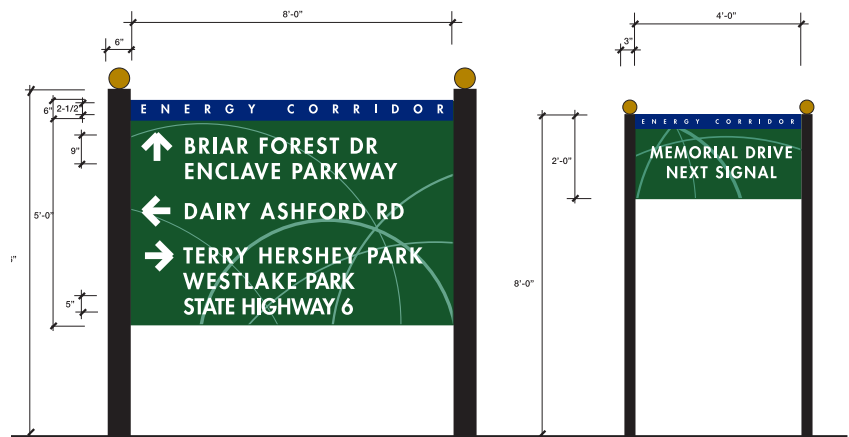
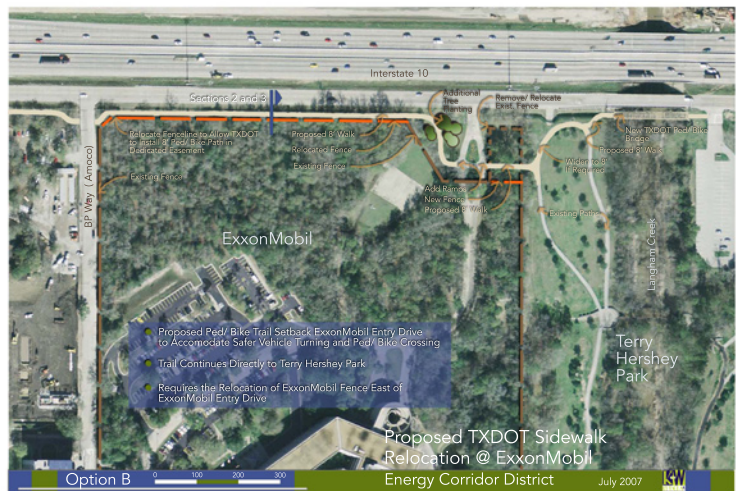
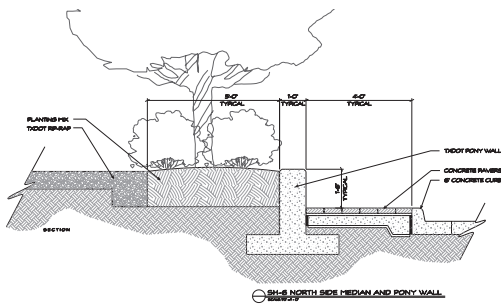
Client: Energy Corridor

District Cost Estimate: \$1 million

Description:

Within the Energy Corridor Management District, Kudela & Weinheimer was responsible for a master plan that addressed **branding** and **iconic recognition** through **signage** and **monumentation** for the area. K&W works closely with TxDOT on the expansion of I-10. Kudela & Weinheimer is responsible for the landscape and urban design elements that **create identity, visual continuity** and inviting **streetscapes**. A system of parks and trails makes the Corridor distinctive and memorable. The National Park Service is developing a master plan of trails connecting homes to work and Kudela & Weinheimer is responsible for connecting the trails to the other public spaces not being done by the National Park Service.

*The Energy Corridor District's primary purpose is to increase the value of properties in the District. Local and national property interests recognize the benefit of special districts to protect property owners' investments and increase values.*



**1 Sign Type 1**  
Thoroughfare Directional  
1/2" = 1'-0"

**2 Sign Type 2**  
Next Signal Identification  
1/2" = 1'-0"